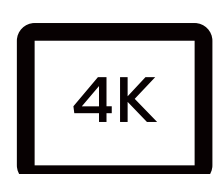


# MAXHUB XBoard V7 Series

## Model: V5550

Experience the ultimate in video conferencing and collaboration with the MAXHUB XBoard V7 series. Powered by a Windows PC module, this all-in-one design device seamlessly integrates an intelligent triple camera, cutting-edge audio processing, interactive whiteboarding, and an intuitive meeting launcher, all housed within a single comprehensive collaboration display. This powerful combination enhances the dynamism of meetings and introduces a flexible and creative interaction to your organization.



### Professional 4K Display

High color accuracy,  $\Delta E \leq 1.5$   
Wide color gamut, NTSC 90%  
Non-glare technology, 25% haze



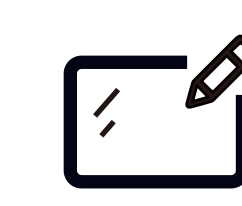
### Precise Touch

Intelligent Touchscreen Technology  
Revolutionary writing experience,  
Windows Ink supported



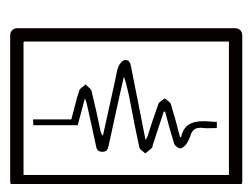
### BYOM Anytime

Embrace seamless efficiency  
enabled by MAXHUB Share  
App or wireless dongle



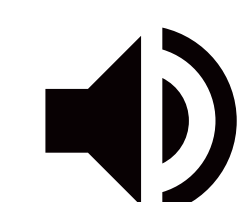
### Smart Whiteboard

Direct annotation  
Real-time collaboration



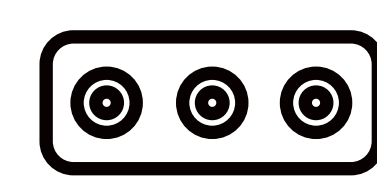
### Get Spatial with Sound

16-mic array, 15 meters pick-up  
range. Multiple AI-enhanced  
audio algorithms



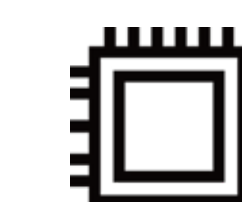
### Built-in Speaker

2 x 10W + 20W speaker  
2.1 sound channel



### Trident Lens System

50 MP+50 MP+50 MP cameras  
5x hybrid zoom, 99° ultra-wide FOV



### Peak Performance

Unleash the power with MT71 series  
PC module. 12th Gen Intel Processor  
with Windows system, stably smooth



Display	
Model	V5550
Screen Size (Inch)	55
Aspect Ratio	16:9
Panel	ADS
Backlight	DLED
Brightness (Typ.)	350 nits
Glass	Zero parallax 3mm thickness 9H tempered
Surface Technology	25% haze Non-glare technology
Resolution	3840 × 2160
Refresh Rate	60 Hz
Contrast Ratio	1200:1 (typ.)
Viewing Angle (H × V)	178° / 178°
Color Gamut	90% NTSC
Display Orientation	Landscape
Response Time	8 ms
Life Time	>50,000 hours
Operation Hours (Hours / Day)	16 / 7
Display Color	1.07B (10 bit)
Color Accuracy	Delta E ≤ 1.5
Sensor	Ambient light sensor Ultrasonic detection sensor
Pixel Pitch	0.315(H) × 0.315(V) mm
Display Area	1209.6(H) × 680.4(V) mm

Connectivity	
<b>I/O Ports (Interactive Display)</b>	
HDMI IN × 2	Up to 4K@60Hz, HDCP 2.2, CEC
USB 2.0 × 1	For system upgrades
USB 3.0 × 2	For external peripherals
USB Type-C IN × 1	USB 2.0, supports DP 1.2 input, wireless dongle pairing, and BYOD
TOUCH 2.0 × 1	USB 2.0 Type B
AUDIO IN × 1	3.5mm Jack
AUDIO OUT × 1	3.5mm Jack
RS232 × 1	Baud rate 9600
RJ45 IN × 1	Mic in, supports 30W POE, microphone cascade, AES67 protocol
<b>I/O Ports (PC Module)</b>	
HDMI OUT × 1	Up to 4K@30Hz
USB 2.0 × 3	For external peripherals
USB 3.0 × 3	For external peripherals
RJ45 IN × 1	10M/100M/1000Mbps
MIC IN × 1	3.5 mm Jack, input for microphone
<b>PC Module Slot</b>	Module slot × 1
<b>PC Module System</b>	Windows 10 IOT Windows 11 Pro
<b>Wi-Fi Slot</b>	Module slot × 1
<b>Wi-Fi ( PC Module)</b>	Wi-Fi 6 supported 802.11ax, 2.4GHz/5GHz
<b>Bluetooth ( PC Module)</b>	5.2

Touch System	
Touch Technology	Intelligent Touchscreen Technology (infrared recognition)
Touch Point	50 points touch
Object Recognition Range	±1.5 mm
Accuracy	±0.5 mm
Response Time	≤2.5 ms
Writing Height	≤1 mm
System (Touch Return)	Windows11/Windows10/Windows8/Windows7/Android/Linux/Mac OS X/Chrome OS
Feature	Windows Ink / Direct Annotation / Palm Rejection / Sharp Erase Multi-input Recognition / Handwriting Recognition

Camera	
Wide Camera	50MP × 1 DFOV 99°, HFOV 86°
Telephoto Camera	50MP × 2 DFOV 68° (combined), HFOV 63° (combined)
Zoom	5x hybrid zoom
Privacy Shutter	Yes
Feature	Personalized presets Auto framing Speaker tracking Multiple-speaker tracking Intelligent focus

Audio	
Sound Channel	2.1
Speaker Power	2 × 10W + 20W

Microphone	
Quantity	16-mic array
Pick-up Angle	180°
Pick-up Range	0~15m
Feature	Intelligent audio fence AI spatial sound AEC (Auto echo cancellation) ANC (AI noise cancellation) AGC (Auto gain control)



Feature	
System OS	MAXHUB OS 7.0 powered by Windows
Screen Share	MAXHUB Share Support BYOM / Miracast / Airplay / Chromecast / P2P
Device Management	MAXHUB Pivot
Protocol Control	RS232 / IP control Supports integration with Crestron / Extron / Q-sys
Special Features	Microsoft Intune

Accessory	
Power Cord	3m × 1
HDMI Cable	1.5m × 1
Stylus	× 2
Wall Mount	WIB6540A
Wireless Adapter	SI07B

Physical Specification	
Dimension (W × H × D)	1269.5 × 792.9 × 102.7 mm
Shipping Dimension (W × H × D)	1372 × 875 × 187 mm
Thickness of machine and wall mount	130.5 mm
Wall-hanging Screw Spec	M8 × 25 mm
VESA	400 × 200 mm
Net Weight	26.85 Kg
Gross Weight	32.25 Kg

Environmental Conditions	
Operating Temperature	0°C~40°C
Storage Temperature	-20°C~60°C
Operating Humidity	10%~90% RH
Storage Humidity	10%~90% RH
Altitude	Below 5000 meters

Power	
Power Supply	100-240V~ 50/60Hz 4.0A
Standby Power	≤ 0.5 W
Power Consumption (Typ.)	101 W
Power Consumption (Max.)	320 W

Certification	
Safety	IEC 62368-1
EMC	Class B
Environment	Energy Star
IP Rating	IP5X design standards

Warranty	
3 years warranty	

Optional Module	
Pluggable PC Module	MT71S / MT71P
Mobile Stand	ST33M / ST23G
Wireless Dongle	WT13



**Statement**

Size and weight vary by configuration and manufacturing process, please refer to the actual product. The product images are for illustrative purposes only and may slightly differ in appearance, colour, size, etc. from the actual product. The description, illustrations, etc. in this document may subject to change in accordance with the latest product specification and performance. Should the above-mentioned change in the document become necessary, the document may be updated without written notice.

# MAXHUB

Where Inspiration Moves Ahead.