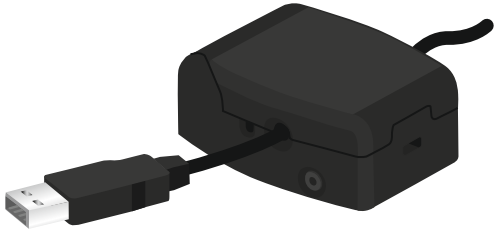


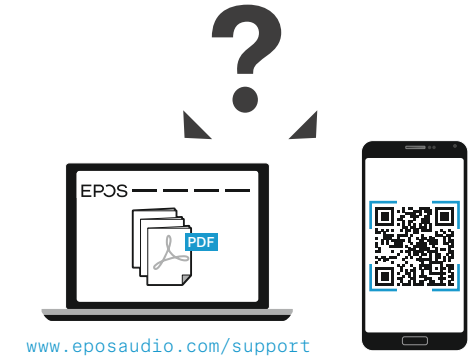
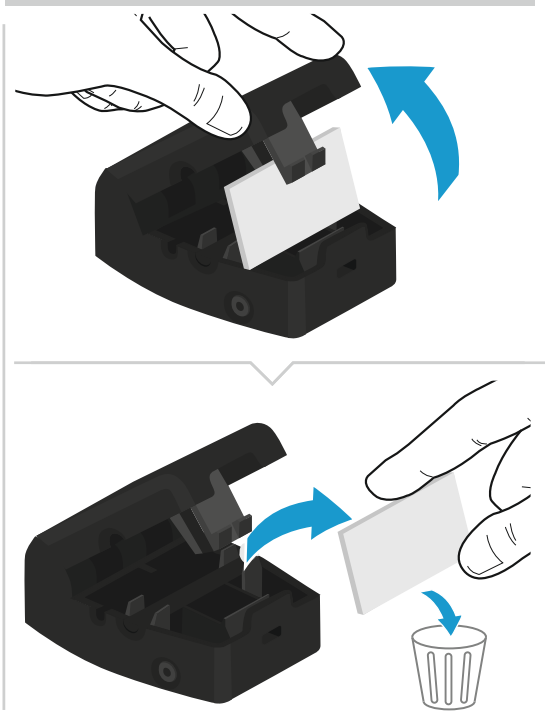
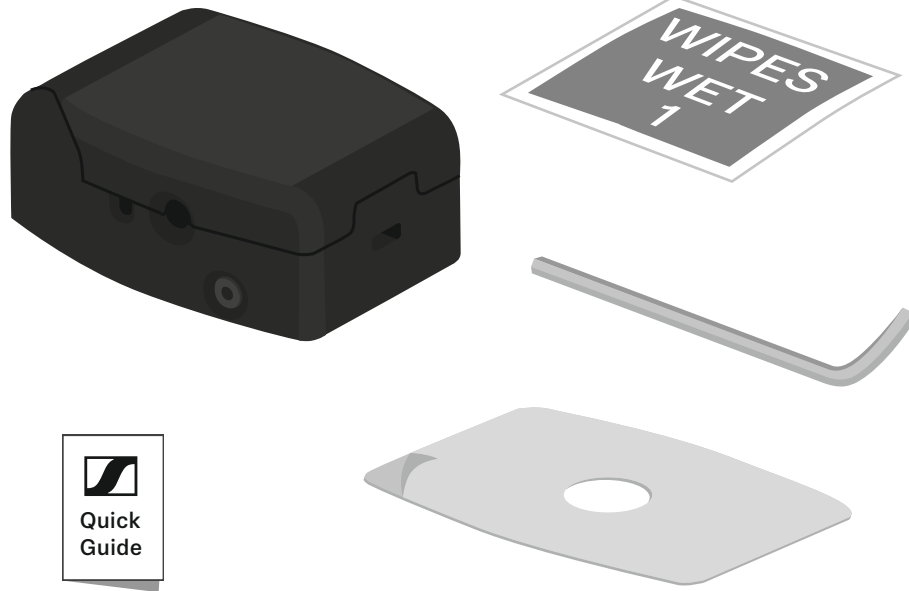


SENNHEISER

Security Cable Lock



- EN Quick Guide
- DE Kurzanleitung
- FR Guide express
- IT Guida rapida
- ES Guía rápida
- PT Guia Rápido
- NL Mini handleiding
- EL Γρήγορος οδηγός
- DA Kvikvejledning
- SV Snabbguide
- FI Pikaopas
- PL Skrócona instrukcja obsługi
- RU Краткое руководство
- ZH 快速入门指南
- TW 快速指南
- TR Hızlı Kılavuz
- JA クイックガイド
- ID Panduan Cepat
- KO 빠른 가이드

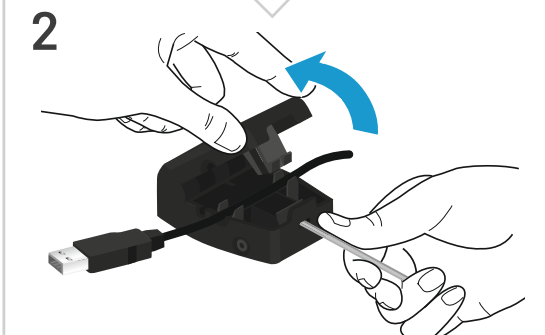
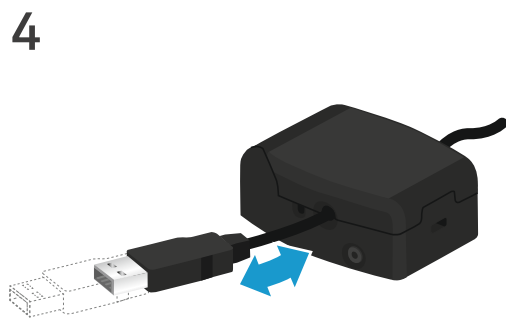
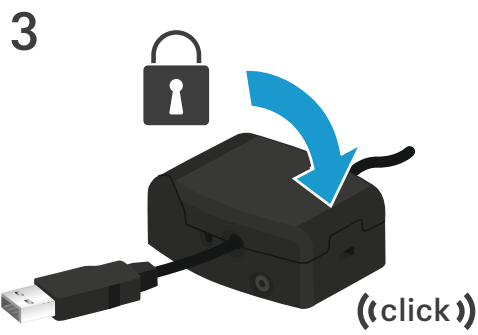
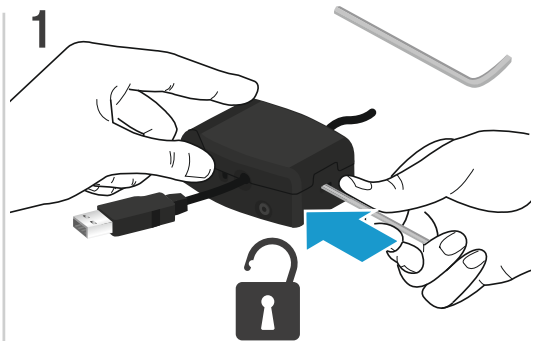
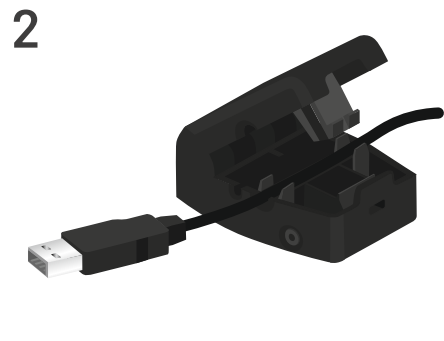


www.eposaudio.com/support

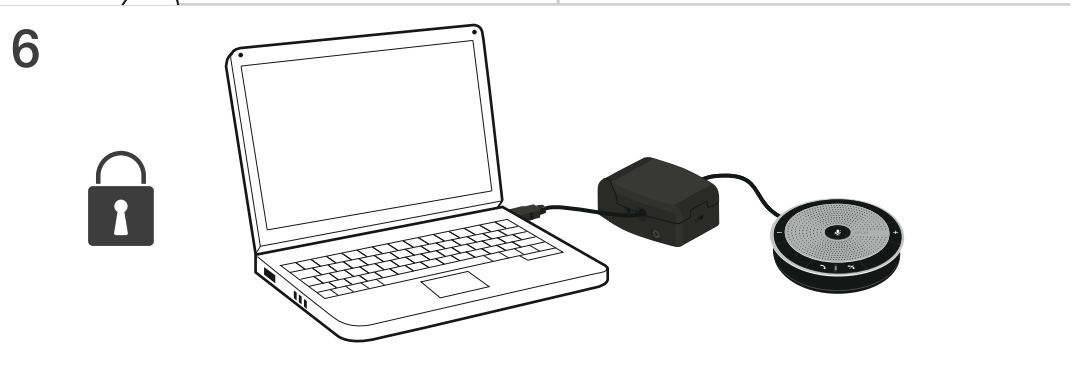
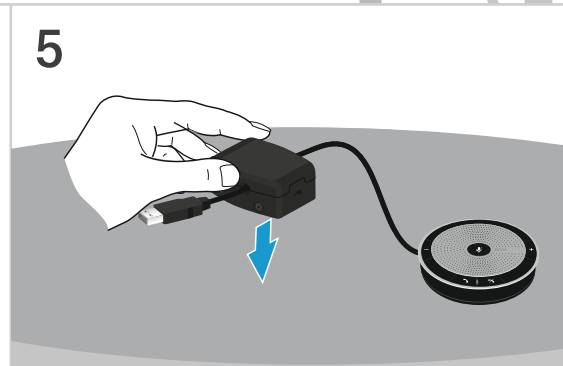
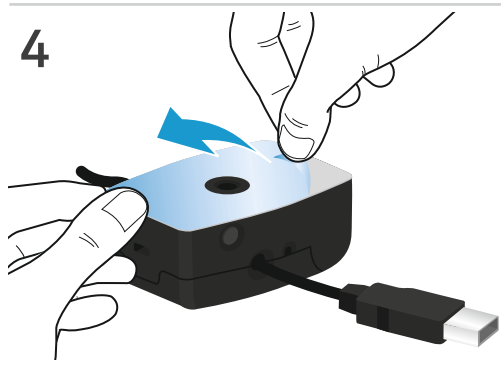
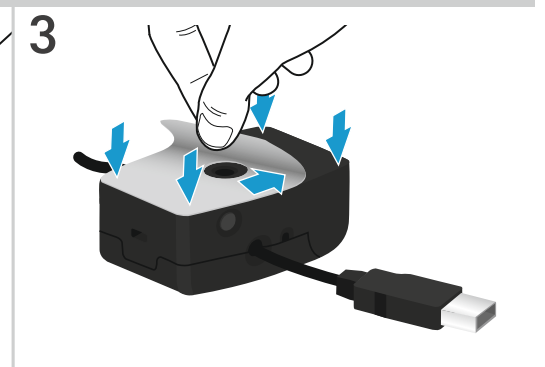
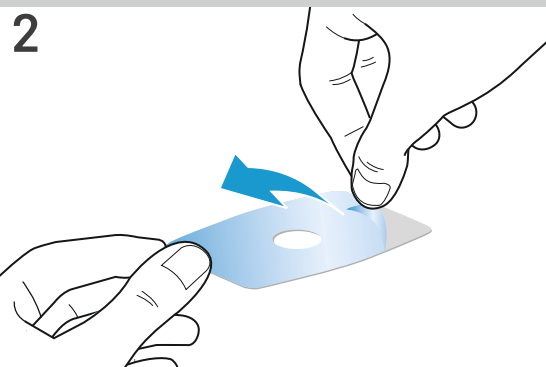
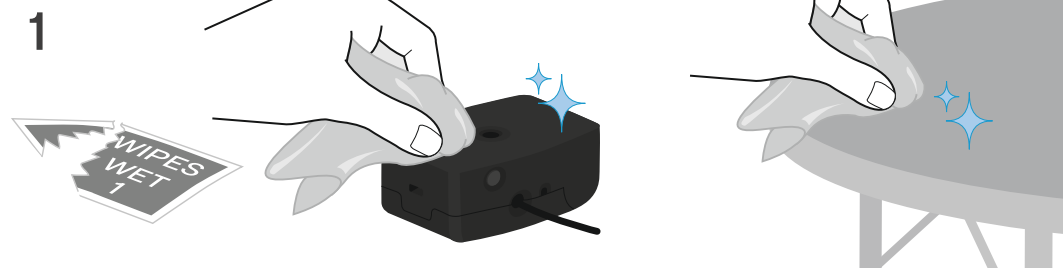
DSEA A/S

Kongebakken 9, DK-2765 Smørum, Denmark
www.eposaudio.com

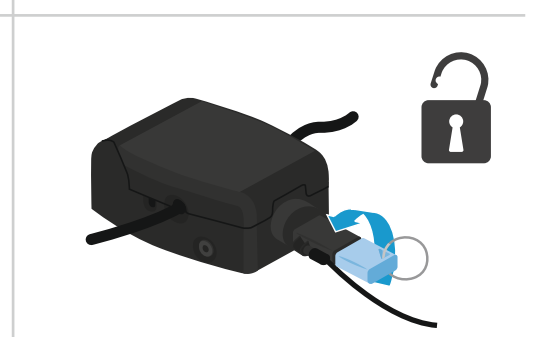
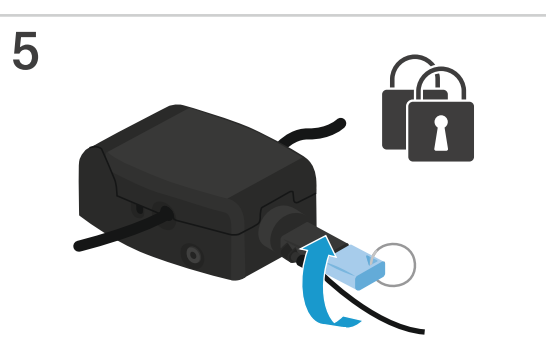
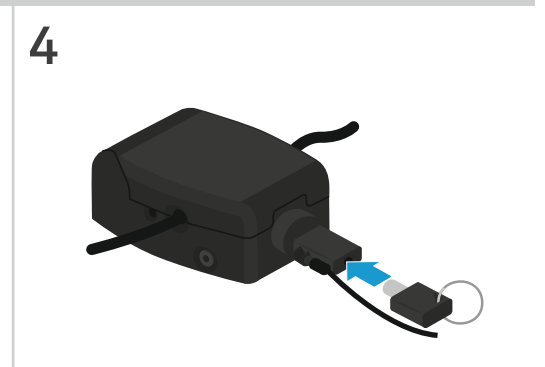
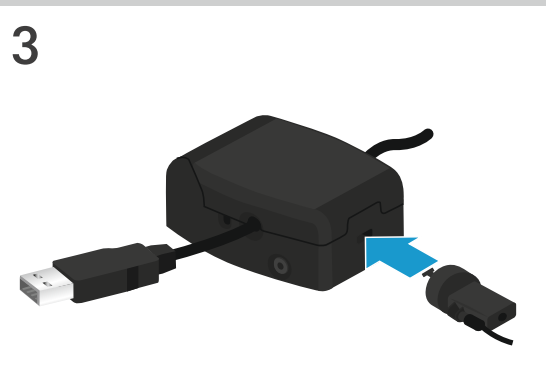
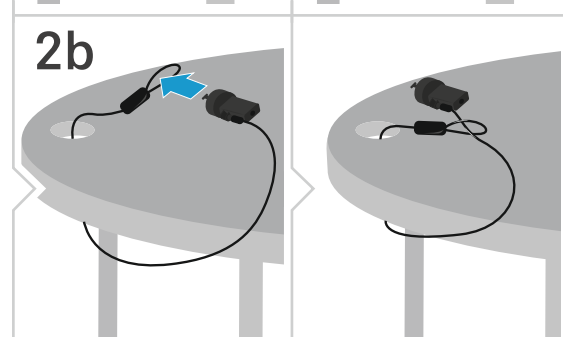
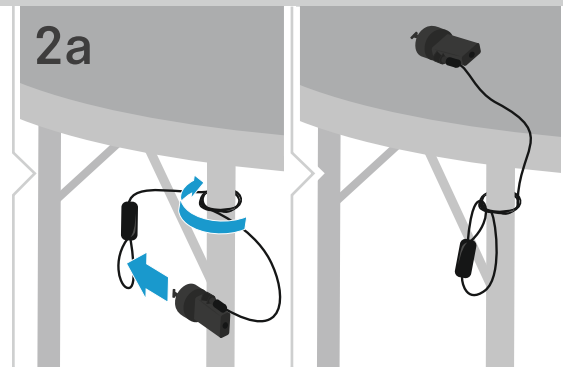
Printed in China, Publ. 08/20, 770-00042/A03



Mounting option A



Mounting option B



* not included

Mounting option C

1

Ø max. 5 mm (M5)
* not included

2a

2b

3a

3b

4a/5b

((click))

4b

Mounting option D

1

Cable - not included

2a

2b

3

4

((click))

5

((click))

4a

((click))

4b

A | C | D

B

1

2a

4x

2b

4x

3a

3b

4a

Remains locked X

4b

Opens

A | B | C

Secure 2 devices
e.g. a webcam or headset

1

2

((click))

