



Installing and Administering Avaya J100 Series IP Phones

Notices

© 2022 Avaya Inc. All Rights Reserved.

You may, at your own risk, assemble a MyDocs collection solely for your own internal business purposes, which constitutes a modification to the original published version of the publications. Avaya shall not be responsible for any modifications, additions, or deletions to the original published version of publications. You agree to defend, indemnify and hold harmless Avaya, Avaya's agents, servants and employees against all claims, lawsuits, demands and judgments arising out of, or in connection with, your modifications, additions or deletions to the publications.

A single topic or a collection of topics may come from multiple Avaya publications. All of the content in your collection is subject to the legal notices and disclaimers in the publications from which you assembled the collection. For information on licenses and license types, trademarks, and regulatory statements, see the original publications from which you copied the topics in your collection.

Except where expressly stated by Avaya otherwise, no use should be made of materials provided by Avaya on this site. All content on this site and the publications provided by Avaya including the selection, arrangement and design of the content is owned by Avaya and/or its licensors and is protected by copyright and other intellectual property laws including the sui generis rights relating to the protection of databases. Avaya owns all right, title and interest to any modifications, additions or deletions to the content in the Avaya publications.

Installing the wireless module

Before you begin

Obtain the following items:

- Phillips #1 screw driver to install the screw of the Avaya J100 Wireless Module.
- A flat screw driver that fits in the opening of the module panel.

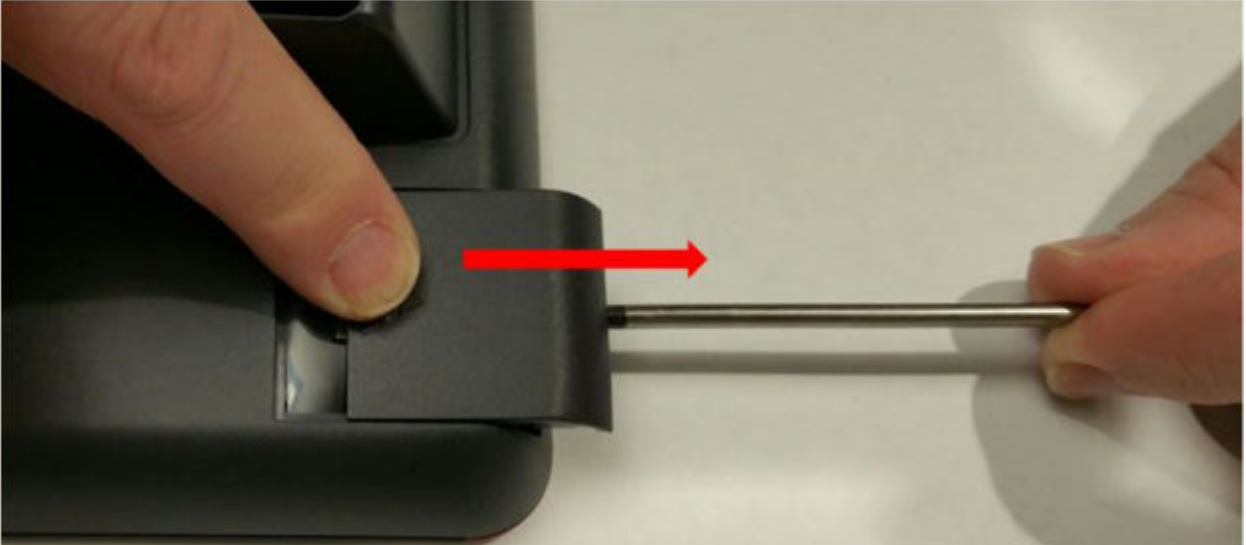
Procedure

1. Insert the screw driver in the opening of the module panel to release the latch. Do not pry open the panel.



Installing the wireless module

2. To remove the module panel, slide the panel out in the direction of the arrow.

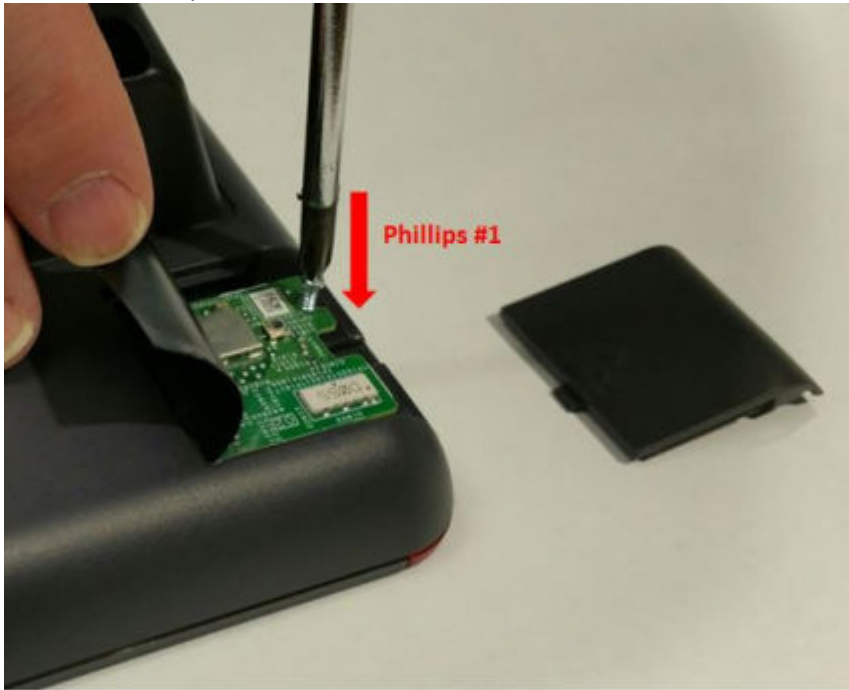


3. Insert the Avaya J100 Wireless Module to the edge connector.



Installing the wireless module

4. Use the Phillips #1 screwdriver to fasten the module.



5. Slide the module panel inward to close.