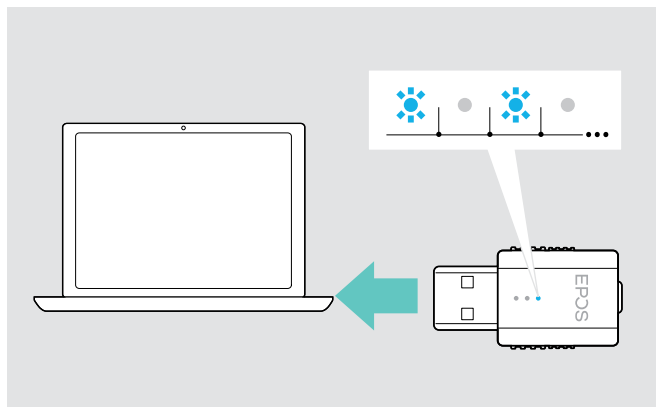


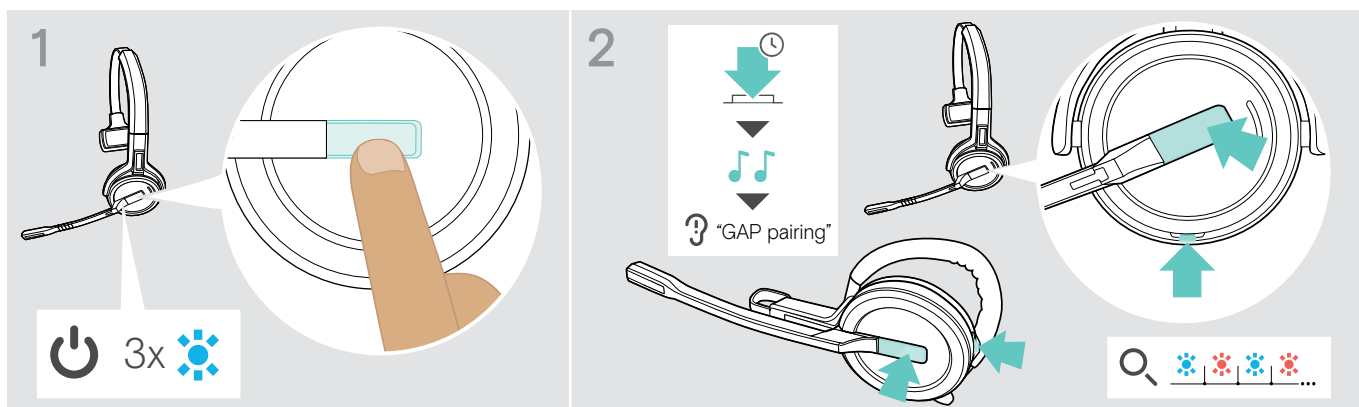
## Connecting the dongle to a computer



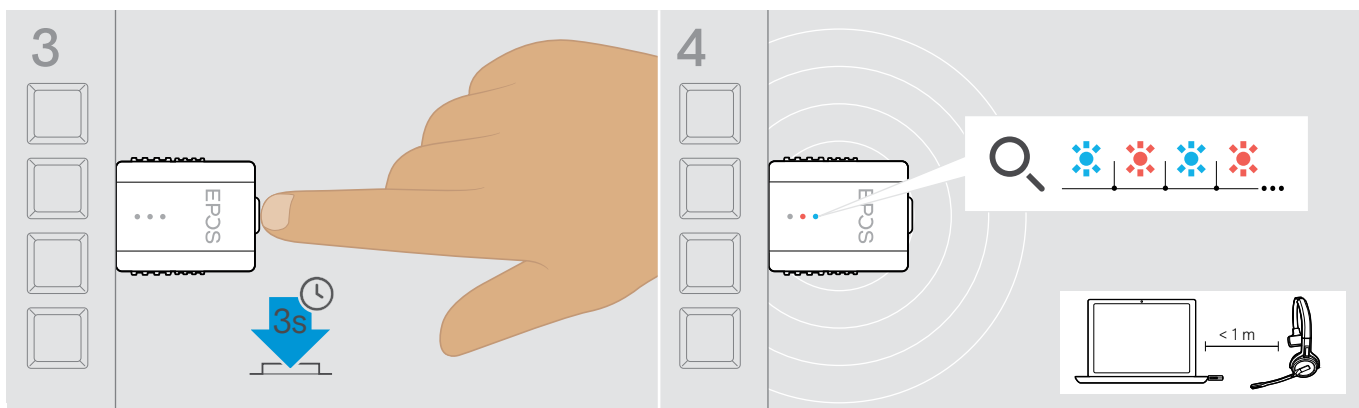
The dongle controls the wireless communication between computer and headset.

- ▶ Connect the dongle to a USB socket on your computer. The dongle flashes blue or goes directly into pairing mode when used for the first time (see next chapter). The operating system detects the USB audio device “EPOS IMPACT D1” and installs the necessary drivers.

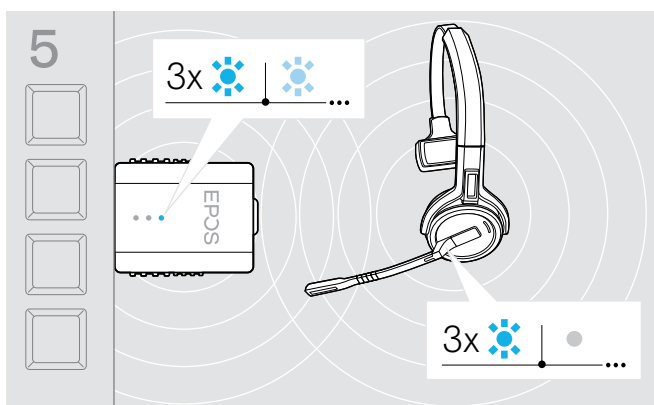
## Pairing the headset and the dongle



- ▶ Press the hook button to switch the headset on. The LED flashes 3 times blue.
- ▶ Press and hold the hook and mute button simultaneously until you hear 2 beeps and the voice prompt “GAP pairing”. Release the buttons. The LED flashes blue / red alternately.



- ▶ Press and hold the dongle's button for 3 seconds to enter pairing mode. The LED alternately flashes blue and red.



If pairing is successful, the dongle LED lights up dimmed blue and the headset LED switches off.

If pairing is not successful within 2 minutes, headset and dongle switch back to standby mode.